

HCH-701 *Journey* Your Favorite Embroidery Machine

engineered & manufactured by
HappyJapan



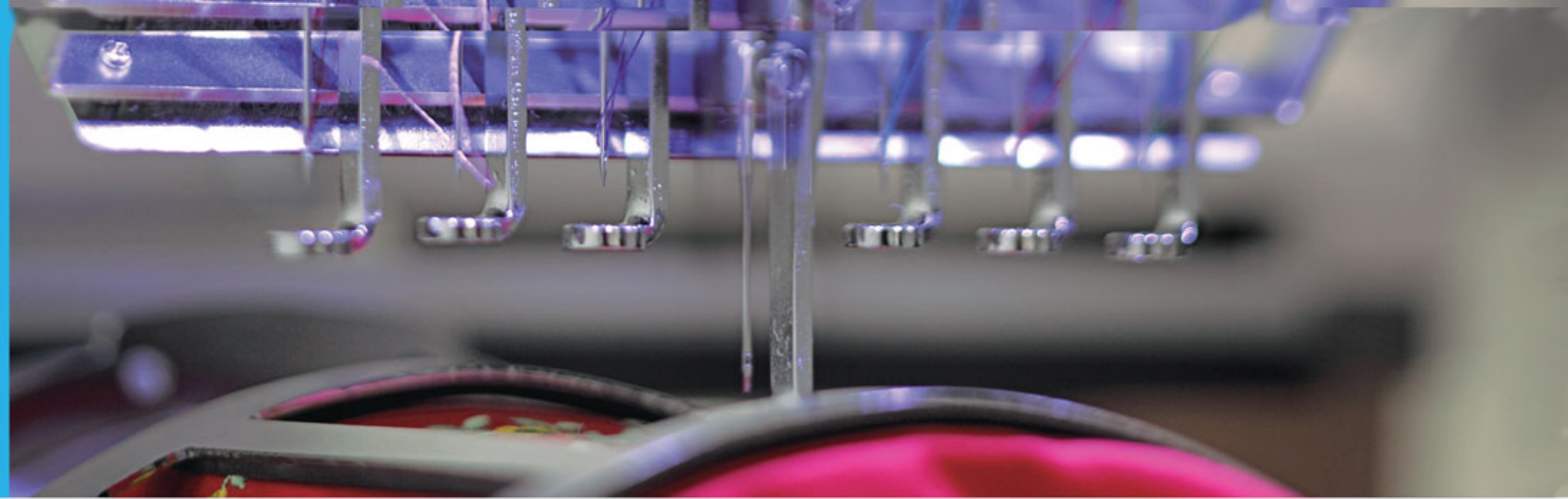
Easy,
Smart,
Creative.
HCH-701-30



Read about Journey at www.happyemb.com • Brought to you by **TEXMACDIRECT**

HCH-701 Journey

from HAPPY Industrial Corp. of Japan



Easy and Smart



Easy to thread



Touch Panel

250 patterns memory
40,000,000 stitches memory



USB and Mouse



LAN and USB connection

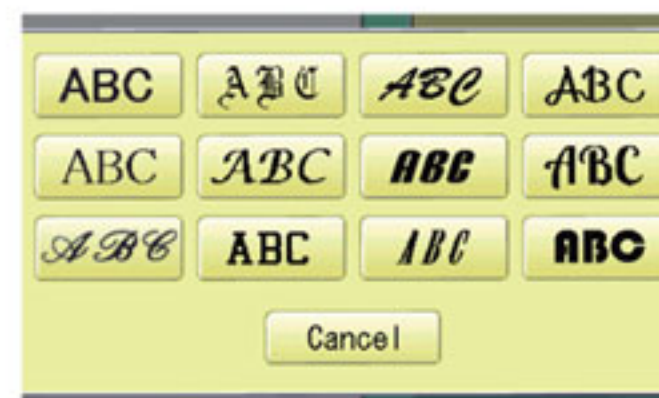


Built-in Bobbin winder



Editing function in HAPPY LAN/LINK software

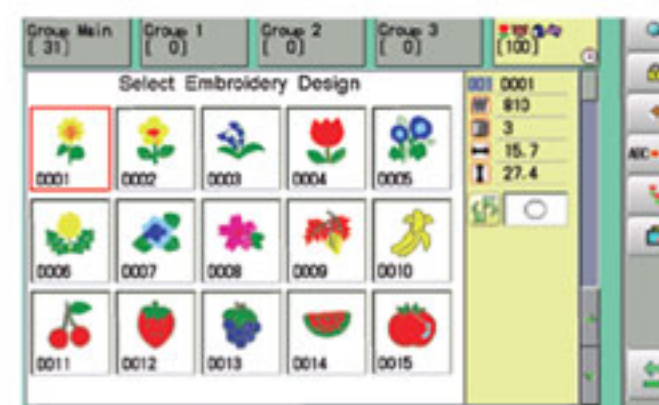
Creative



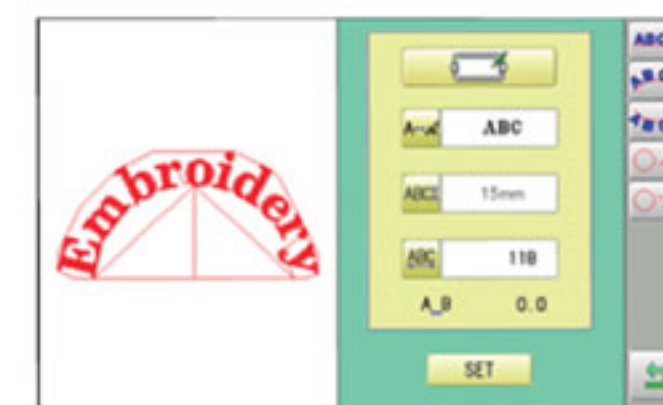
12 fonts / 6 sizes



Laser line positioning



100 one point built-in designs



Arch Editing



Auto Angle Adjustment

Options



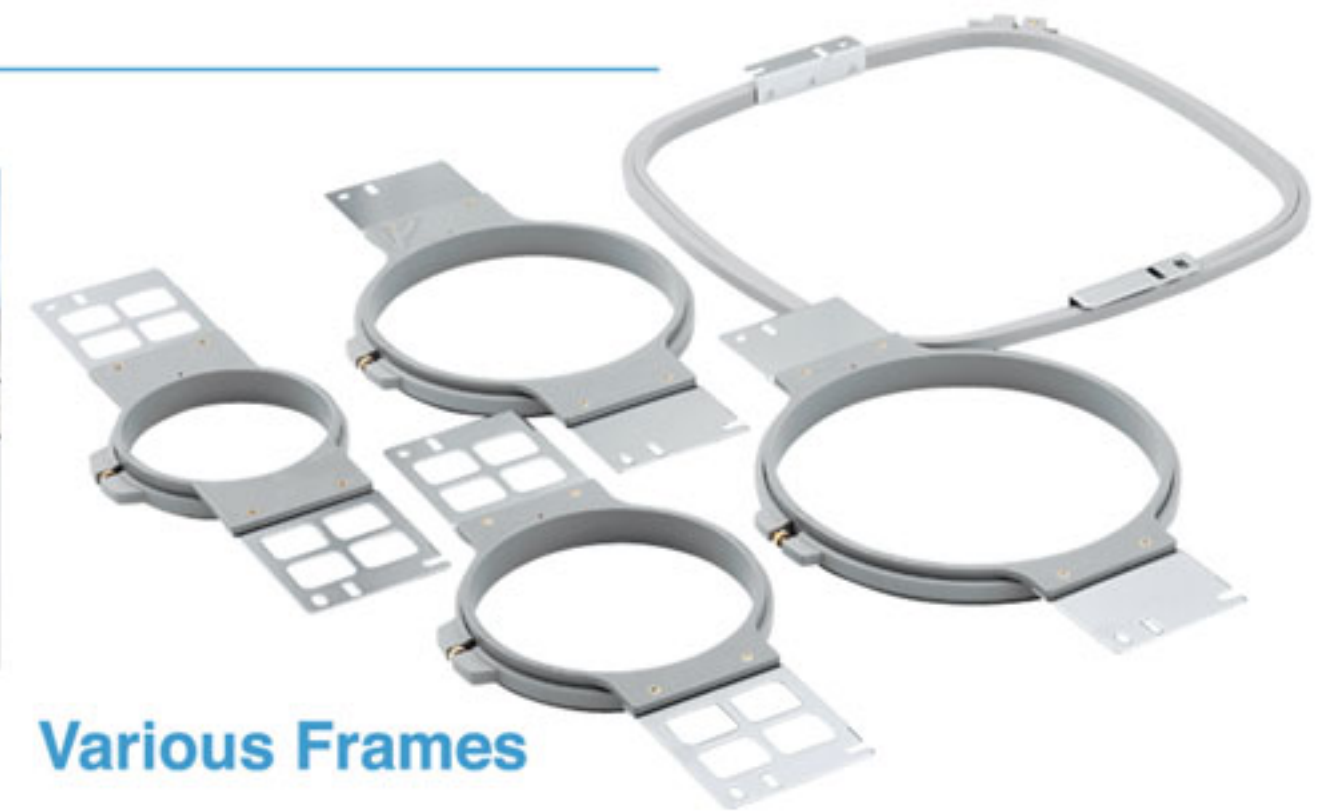
Cap Frames



One Point Frames



Sock Frames



Various Frames

Specifications

MODEL	Needles	Embroidery Area(DxW)			Maximum Speed (r.p.m)	Power Supply	Power Consumption	Frequency	Machine size	Width		Depth	Height	
		Maximum	Wide Cap Frame	Low-Profile Cap Frame						Opening Control panel	Closing Control panel		with thread stand	without thread stand
HCH-701-30	7	285×290mm 11.2×11.4inch	67×290mm 2.6×11.4inch	67×180mm 2.6×7.1inch	1,000 600(cap)	Single Phase 100-120V 200-240V	220W 1.6A	50/60Hz	mm	642	470	745	734	580
									Inch	25.3	18.5	29.3	28.9	23.3

provided by **TEXMACDIRECT** www.happyemb.com toll-free 877.335.5206